



19"GERMANY[®]
EXPORT RACK

GERMAN RACK



RACK CABINET SERVER RACK DATA CENTER RACK TELECOM RACK OPEN RACK WALL RACK VENTILATING FAN
AC POWER DISTRIBUTION UNIT COMPONENT SHELVES ACCESSORIES SPECIAL SERVER RACK, DATA CENTER RACK

RACK CABINET



19"GERMANY[®]
EXPORT RACK

G3 SERIES



42 U



27 U



15 U



CATALOG 19" GERMANY RACK

Feature

- ◆ **Designed and Manufactured** to comply with the standard of ANSI/EIA-310D-1992 (Rev.EIA-310C), IEC60297-1, IEC60297-2, BS5954 Part : 2, DIN 41494.
- ◆ **Modular Knock Down** System in order to be delivered conveniently. VCD manual displaying every step of assembly is provided.
- ◆ **Produced** from Electro-Galvanized Sheet Steel with thickness of 1.5 mm. Mounting Pole, Frame Structure and Base made of 2.0 mm. Electro-galvanized Sheet Steel. Castor Base stand made of 3.0 mm. steel, 100% rust proof.
- ◆ **The structure** mounted as wedge lock for strength increasing.
- ◆ **Mounting Pole** were designed to be C-shape Angle in order to increase the strength. Punching of square mounting hole 10 x 10 mm. on both flange. They can be adjusted in/out freely to meet customer's needs. And provide the U-height screened on the mounting pole.
- ◆ **Front Door** is the steel frame with acrylic 5.0 mm. thickness with film protection and the width of acrylic is 38 cm. (the height is being influenced by the size of the rack). Door edge is bore with gray dust-proof rubber seal (3 fins). Top the front door has embossed trademark. Security locks with 19" Germany Master Key.
- ◆ **Rear Door** is the steel door with 34 x 23 cm. dust-proof screen of ventilation slot at the bottom. Inside the rear door has the T-frame 70 mm. width mounted to prevent the door from swinging. Door edge is also bore with gray dust-proof rubber seal (3 fins). Security locks with 19" Germany Master Key which is the same set as the front door.
- ◆ **Hinge** is 19" Germany Export Rack products made from 3 pieces of high strength special PVC (ABS), rust-free and without any interfering noise. The reversibility of front and rear door opening from left of right by adjusting at one screw nut of hinge.

RACK CABINET



19"GERMANY[®]
EXPORT RACK

G3 SERIES

- ◆ **Side Panels** are steel with two handles of 19" Germany slide latch on the top part in order to easily removable. Inside the side panel has the vertical frame 70 mm. width mounted to prevent the panel for strenghten. Security lock with 19" Germany Master Key which is the same set as the front door.
- ◆ **Roof Cover** can be mounted with various type of single, dual and triple ventilating fans which can be maximum mounted 6 ventilating fans and can also be changed to vented raised roof cover in option.
- ◆ **Base** has the same width and depth of cabinet to fully supportive to all the weight. The bottom is three parts plinth with slide shutter for cable entry and gray sponge to protect any inner-passing by animals, any kind of ventilating fan can be equipped there as well.
- ◆ **Pedestal** was equipped with the castor base and is adjustable; by all of the 4 Pedestal's base made of black ABS and can be freely adjustable 180 degree to suit the slope and protect all effects from Electrostatic and earth leakage.
- ◆ **Castor** is 19" Germany Export Rack made of back nylon six with the diameter of 50 mm; equipped on the 360 degree swivel that allow to be moving conveniently with capacity the static load 150 kgs per castor.
- ◆ **New Shine Light Gray** Two-Tone color by Electrostatic Powder Coating paint for scratch resistance.
- ◆ **Grounding** with color stripe green and yellow copper wire 2.5 mm.; connecting between all removable part of Rack.
- ◆ **Screw Set** compose of Screws, Captive nuts, plastic Washer; by each were coated with nickel and M6 thread system.
- ◆ **Static load rating** 1200 kgs. certificated by KMUTT. The result shall be less than 3.0 mm. or 0.14 %.
- ◆ **Manufacturing and Distribution** by ISO 9001:2008 Company.

Deliverly with

- 3 Master keys with trademark and number on the keys.
- Set of nut and screw according to the size of rack.

Options

Color	*Black or other
Width	21 inch or 23 inch
Thickness	1.6 mm or other
Door	Double door or Handle lock



Top

Bottom



Front Door w/logo



Mounting Pole w/screen UH



Hinge w/logo



Slide Latch w/logo



Grounding



Master Key w/logo



Security Cam Locks



Rear Door w/T Frame



Ventilation Slot



Base w/slide shutter



Pedestal



Castor w/logo



Wedge Locks

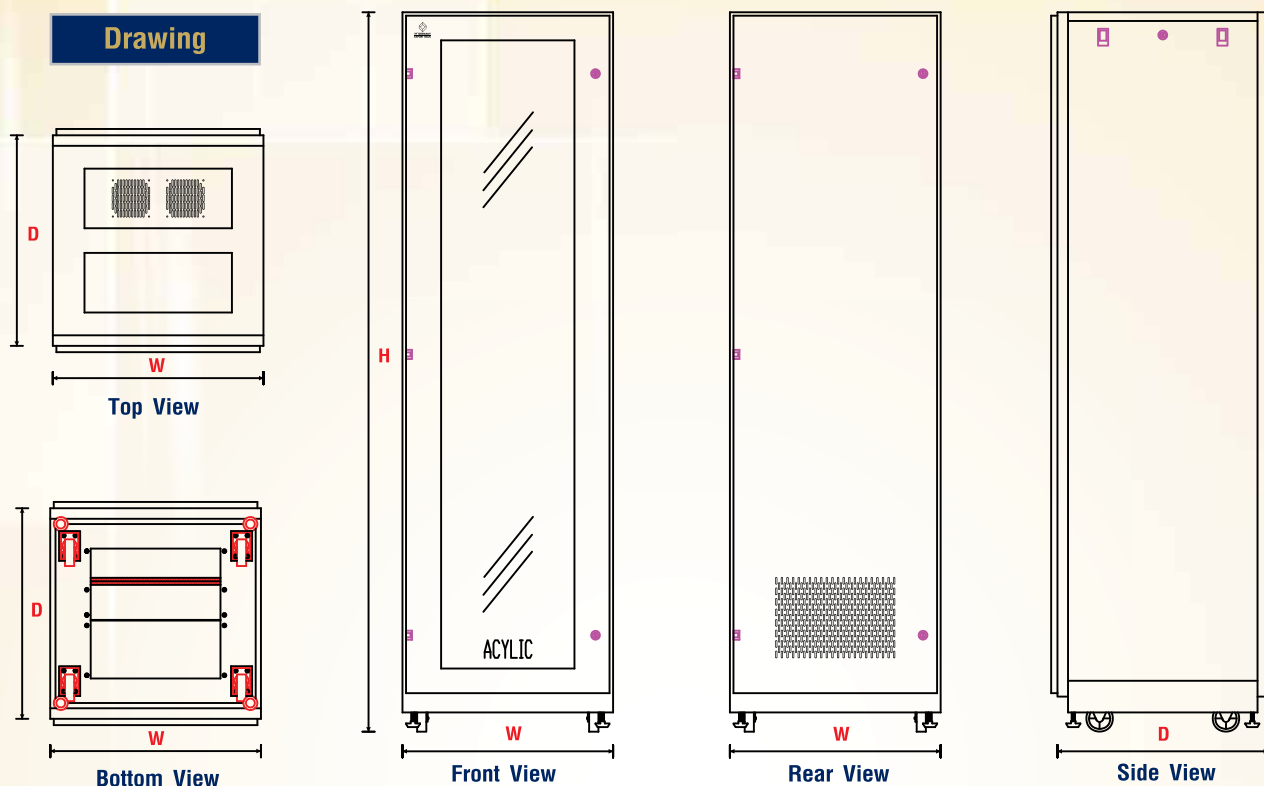


RACK CABINET



19"GERMANY
EXPORT RACK

G3 SERIES



CATALOG 19" GERMANY RACK

Ordering Information

W=Width 600 mm. Standard

U (1U=44.45 mm.)	Overall H Height(mm.)	Order No. of Different Depth (mm.)				
		D = 600	D = 800	D = 900	D = 1000	D = 1100
15U	850	G3-60615	G3-60815	G3-60915	G3-61015	G3-61115
27U	1390	G3-60627	G3-60827	G3-60927	G3-61027	G3-61127
36U	1790	G3-60636	G3-60836	G3-60936	G3-61036	G3-61136
39U	1850	G3-60639	G3-60839	G3-60939	G3-61039	G3-61139
42U	2050	G3-60642	G3-60842	G3-60942	G3-61042	G3-61142
45U	2185	G3-60645	G3-60845	G3-60945	G3-61045	G3-61145

W=Width 800 mm. Standard

U (1U=44.45 mm.)	Overall H Height(mm.)	Order No. of Different Depth (mm.)			
		D = 800	D = 900	D = 1000	D = 1100
15U	850	G3-80815	G3-80915	G3-81015	G3-81115
27U	1390	G3-80827	G3-80927	G3-81027	G3-81127
36U	1790	G3-80836	G3-80936	G3-81036	G3-81136
39U	1850	G3-80839	G3-80939	G3-81039	G3-81139
42U	2050	G3-80842	G3-80942	G3-81042	G3-81142
45U	2185	G3-80845	G3-80945	G3-81045	G3-81145

* Order No. for Black Color

G3-XXXXXB

Sample : G3-60642B Rack Cabinet 42U, 60 x 60 cm., Black Color

SERVER RACK



19"GERMANY
EXPORT RACK

G4 SERIES



42 U



27 U



15 U



Feature

- ◆ **Designed and Manufactured** to comply with the standard of ANSI/EIA-310D-1992 (Rev.EIA-310C), IEC60297-1, IEC60297-2, BS5954 Part : 2, DIN 41494.
- ◆ **Modular Knock Down** System in order to be delivered conveniently.VCD manual displaying every step of assembly is provided.
- ◆ **Produced** from Electro-Galvanized Sheet Steel with thickness of 1.5 mm. Mounting Pole, Frame Structure and Base made of 2.0 mm. Electro-galvanized Sheet Steel. Castor Base stand made of 3.0 mm. steel, 100% rust proof.
- ◆ **The structure** mounted as wedge lock for strength increasing.
- ◆ **Mounting Pole** were designed to be C-shape Angle in order to increase the strength. Punching of square mounting hole 10 x 10 mm. on both flange. They can be adjusted in/out freely to meet customer's needs. And provide the U-height screened on the mounting pole.
- ◆ **Front Door** is the steel frame with Acrylic 5.0 mm. thickness with film protection and the width of acrylic is 38 cm. (the height is being influenced by the size of the rack) which is perforated tetragon surrounding the acrylic (same as honney comb). Door edge is bore with gray dust-proof rubber seal (3 fins). Security locks with 19" Germany Master Key.
- ◆ **Rear Door** is the steel door with perforated tetragon ventilation 50% of door's area (same as honney comb) to prevent the heat accumulation inside the cabinet to extend the life of all network equipments and servers. Door edge is bore with gray dust-proof rubber seal (3 fins). Security locks with 19" Germany Master Key which is the same set as the front door.
- ◆ **Hinge** is 19" Germany Export Rack products made from 3 pieces of high strength special PVC (ABS), rust-free and without any interfering noise. The reversibility of front and rear door opening from left of right by adjusting at one screw nut of hinge.

CATALOG 19" GERMANY RACK

SERVER RACK



19"GERMANY
EXPORT RACK

G4 SERIES

- ◆ **Side Panels** are steel with two handles of 19" Germany Slide Latch on the top part in order to easily removable. Inside the side panel has the vertical frame 70 mm. width mounted to prevent the panel for strenghten. Security lock with 19" Germany Master Key which is the same set as the front door.
- ◆ **Roof Cover** can be mounted with various type of single, dual and triple ventilating fans which can be maximum mounted 6 ventilating fans and can also be changed to vented raised roof cover in option.
- ◆ **Base** has the same width and depth of cabinet to fully supportive to all the weight. The bottom is three parts plinth with slide shutter for cable entry and gray sponge to protect any inner-passing by animals, any kind of ventilating fan can be equipped there as well.
- ◆ **Pedestal** was equipped with the castor base and is adjustable; by all of the 4 Pedestal's base made of black ABS and can be freely adjustable 180 degree to suit the slope and protect all effects from Electrostatic and earth leakage.
- ◆ **Castor** is 19" Germany Export Rack made of back nylon six with the diameter of 50 mm; equipped on the 360 degree swivel that allow to be moving conveniently with capacity the static load 150 kgs per castor.
- ◆ **New Shine Light Gray** Two-Tone color by Electrostatic Powder Coating paint for scratch resistance.
- ◆ **Grounding** with color stripe green and yellow copper wire 2.5 mm.; connecting between all removable part of Rack.
- ◆ **Screw Set** compose of Screws, Captive nuts, plastic Washer; by each were coated with nickel and M6 thread system.
- ◆ **Static load rating** 1200 kgs. certificated by KMUTT. The result shall be less than 3.0 mm. or 0.14 %.
- ◆ **Manufacturing and Distribution** by ISO 9001:2008 Company.

CATALOG 19" GERMANY RACK

Deliverly with

- 3 Master keys with trademark and number on the keys.
- Set of nut and screw according to the size of rack.

Options

Color	*Black or other
Width	21 inch or 23 inch
Thickness	1.6 mm or other
Door	Double door or Handle lock

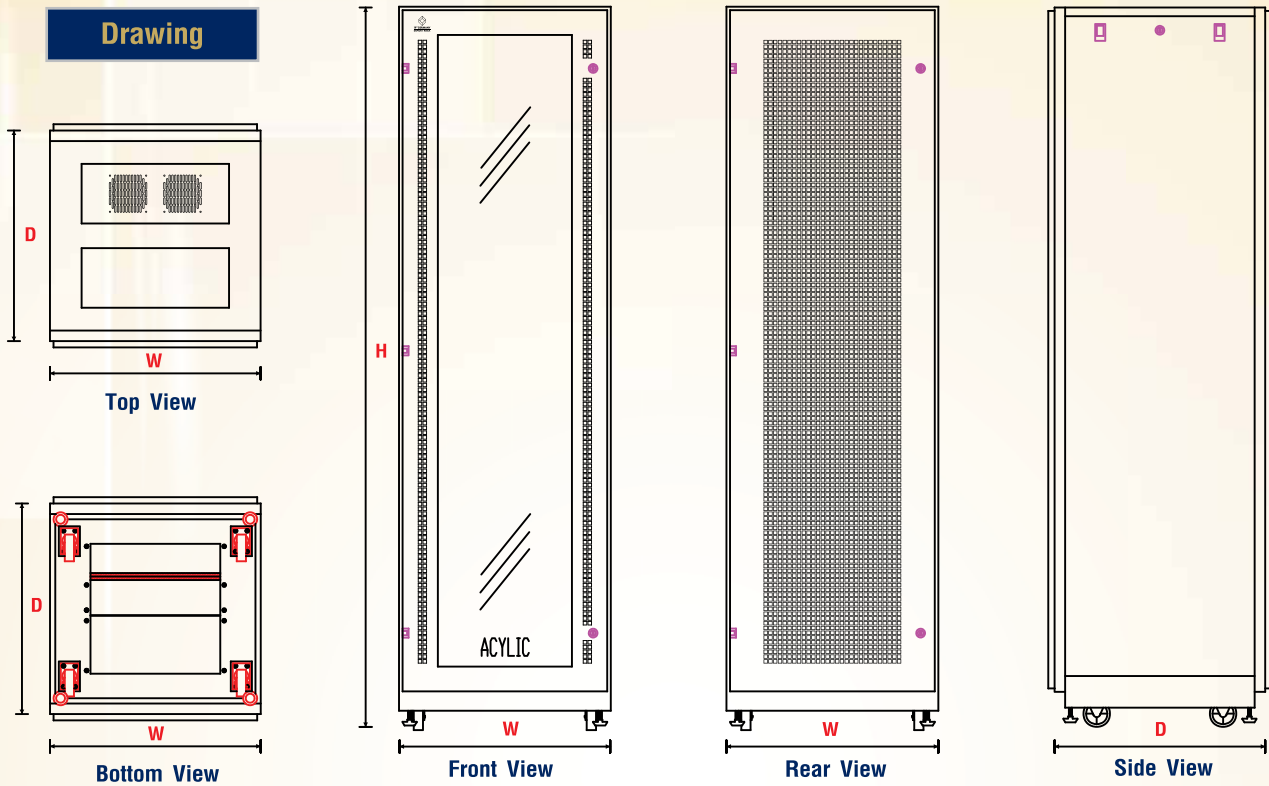


SERVER RACK



19"GERMANY
EXPORT RACK

G4 SERIES



CATALOG 19" GERMANY RACK

Ordering Information

W=Width 600 mm. Standard

U (1U=44.45 mm.)	Overall H Height(mm.)	Order No. of Different Depth (mm.)				
		D = 600	D = 800	D = 900	D = 1000	D = 1100
15U	850	G4-60615	G4-60815	G4-60915	G4-61015	G4-61115
27U	1390	G4-60627	G4-60827	G4-60927	G4-61027	G4-61127
36U	1790	G4-60636	G4-60836	G4-60936	G4-61036	G4-61136
39U	1850	G4-60639	G4-60839	G4-60939	G4-61039	G4-61139
42U	2050	G4-60642	G4-60842	G4-60942	G4-61042	G4-61142
45U	2185	G4-60645	G4-60845	G4-60945	G4-61045	G4-61145

W=Width 800 mm. Standard

U (1U=44.45 mm.)	Overall H Height(mm.)	Order No. of Different Depth (mm.)			
		D = 800	D = 900	D = 1000	D = 1100
15U	850	G4-80815	G4-80915	G4-81015	G4-81115
27U	1390	G4-80827	G4-80927	G4-81027	G4-81127
36U	1790	G4-80836	G4-80936	G4-81036	G4-81136
39U	1850	G4-80839	G4-80939	G4-81039	G4-81139
42U	2050	G4-80842	G4-80942	G4-81042	G4-81142
45U	2185	G4-80845	G4-80945	G4-81045	G4-81145

* Order No. for Black Color

G4-XXXXXB

Sample : G4-60642B Server Rack 42U, 60 x 60 cm., Black Color

DATA CENTER RACK



19"GERMANY
EXPORT RACK

G5 SERIES



42 U



27 U



15 U



CATALOG 19" GERMANY RACK

Feature

- ◆ **Designed and Manufactured** to comply with the standard of ANSI/EIA-310D-1992 (Rev.EIA-310C), IEC60297-1, IEC60297-2, BS5954 Part : 2, DIN 41494.
- ◆ **Modular Knock Down** System in order to be delivered conveniently. VCD manual displaying every step of assembly is provided.
- ◆ **Produced** from Electro-Galvanized Sheet Steel with thickness of 1.5 mm. Mounting Pole, Frame Structure and Base made of 2.0 mm. Electro-galvanize Sheet Steel. Castor Base stand made of 3.0 mm. steel, 100% rust proof.
- ◆ **The structure** mounted as wedge lock for strength increasing.
- ◆ **Mounting Pole** were designed to be C-shape Angle in order to increase the strength. Punching of square mounting hole 10 x 10 mm. on both flange. They can be adjusted in/out freely to meet customer's needs. And provide the U-height plate on the mounting pole.
- ◆ **Front and rear door** each is the steel door with perforated tetragon ventilation 50% of door's area (same as honey comb) to prevent the heat accumulation inside the cabinet to extend the life of all network equipments and servers. Door edge is bore with gray dust-proof rubber seal (3 fins). Security locks with 19" Germany Master Key.
- ◆ **Hinge** is 19" Germany Export Rack products made from 3 pieces of high strength special PVC (ABS), rust-free and without any interfering noise. The reversibility of front and rear door opening from left of right by adjusting at one screw nut of hinge.
- ◆ **Side Panels** are steel with two handles of 19" Germany slide latch on the top part in order to easily removable. Inside the side panel has the vertical frame 70 mm. width mounted to prevent the panel for strenghten. Security lock with 19" Germany Master Key which is the same set as the front door.

DATA CENTER RACK



19"GERMANY
EXPORT RACK

G5 SERIES

- ◆ **Roof Cover** can be mounted with various type of single, dual and triple ventilating fans which can be maximum mounted 6 ventilating fans and can also be changed to vented raised roof cover in option.
- ◆ **Base** has the same width and depth of cabinet to fully supportive to all the weight. The bottom is three parts plinth with slide shutter for cable entry and gray sponge to protect any inner-passing by animals, any kind of ventilating fan can be equipped there as well.
- ◆ **Pedestal** was equipped with the castor base and is adjustable; by all of the 4 Pedestal's base made of black ABS and can be freely adjustable 180 degree to suit the slope and protect all effects from Electrostatic and earth leakage.
- ◆ **Castor** is 19" Germany Export Rack made of back nylon six with the diameter of 50 mm; equipped on the 360 degree swivel that allow to be moving conveniently with capacity the static load 150 kgs per castor.
- ◆ **New Shine Light Gray** Two-Tone color by Electrostatic Powder Coating paint for scratch resistance.
- ◆ **Grounding** with color stripe green and yellow copper wire 2.5 mm.; connecting between all removable part of Rack.
- ◆ **Screw Set** compose of Screws, Captive nuts, plastic Washer; by each were coated with nickel and M6 thread system.
- ◆ **Static load rating** 1200 kgs. certificated by KMUTT. The result shall be less than 3.0 mm. or 0.14 %.
- ◆ **Manufacturing and Distribution** by ISO 9001:2008 Company.

Deliverly with

- 3 Master keys with trademark and number on the keys.
- Set of nut and screw according to the size of rack.

Options

Color	*Black or other
Width	21 inch or 23 inch
Thickness	1.6 mm or other
Door	Double door or Handle lock

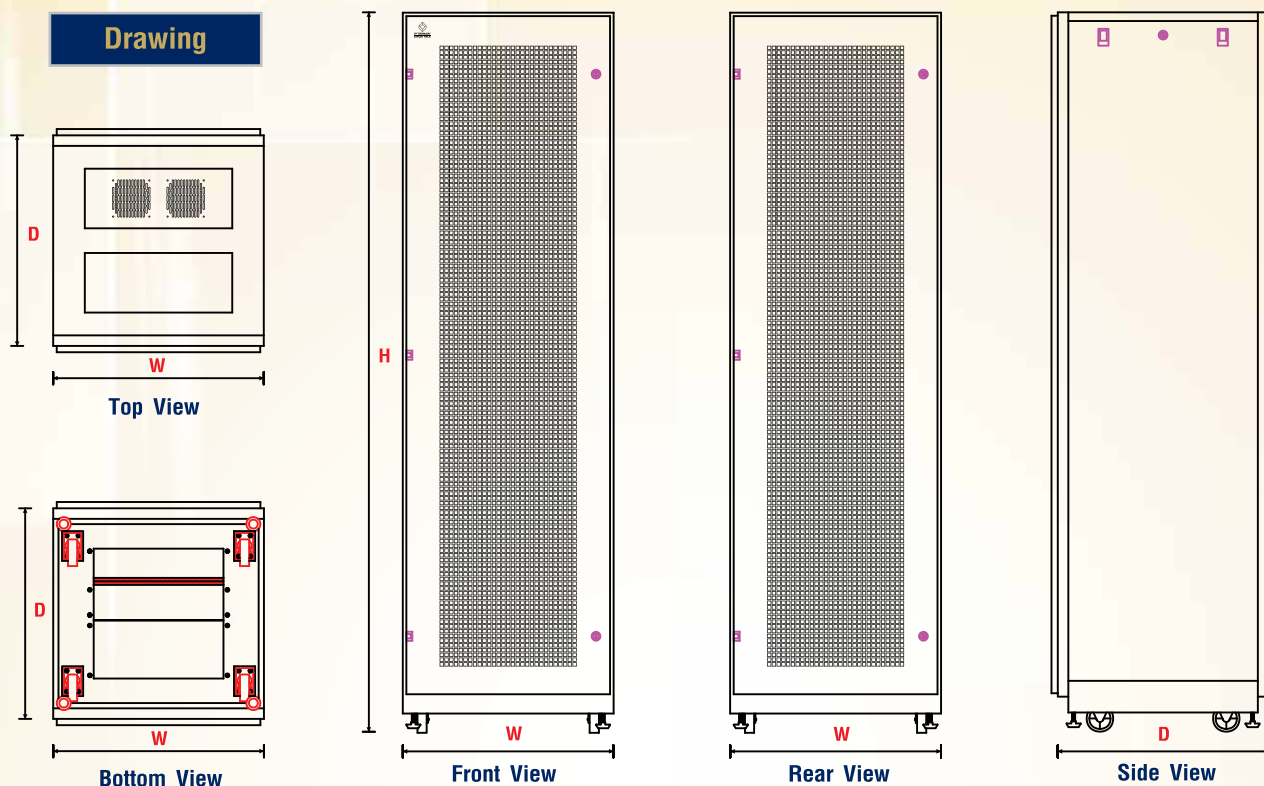


DATA CENTER RACK



19"GERMANY
EXPORT RACK

G5 SERIES



CATALOG 19" GERMANY RACK

Ordering Information

W=Width 600 mm. Standard

U (1U=44.45 mm.)	Overall H Height(mm.)	Order No. of Different Depth (mm.)				
		D = 600	D = 800	D = 900	D = 1000	D = 1100
15U	850	G5-60615	G5-60815	G5-60915	G5-61015	G5-61115
27U	1390	G5-60627	G5-60827	G5-60927	G5-61027	G5-61127
36U	1790	G5-60636	G5-60836	G5-60936	G5-61036	G5-61136
39U	1850	G5-60639	G5-60839	G5-60939	G5-61039	G5-61139
42U	2050	G5-60642	G5-60842	G5-60942	G5-61042	G5-61142
45U	2185	G5-60645	G5-60845	G5-60945	G5-61045	G5-61145

W=Width 800 mm. Standard

U (1U=44.45 mm.)	Overall H Height(mm.)	Order No. of Different Depth (mm.)			
		D = 800	D = 900	D = 1000	D = 1100
15U	850	G5-80815	G5-80915	G5-81015	G5-81115
27U	1390	G5-80827	G5-80927	G5-81027	G5-81127
36U	1790	G5-80836	G5-80936	G5-81036	G5-81136
39U	1850	G5-80839	G5-80939	G5-81039	G5-81139
42U	2050	G5-80842	G5-80942	G5-81042	G5-81142
45U	2185	G5-80845	G5-80945	G5-81045	G5-81145

* Order No. for Black Color G5-XXXXXB

Sample : G5-60642B Data Center Rack 42U, 60 x 60 cm., Black Color



Feature



Cable Management



Base



Mounting Pole

- ◆ **Designed and Manufactured** to the standard of ETSI (The European Telecommunications Standards Institute) or ANSI/EIA-310D-1992 with strength durability.
- ◆ **Telecom Rack** was consisted with Top part, Base part and Fixed pole which drilled hole follow the standard
- ◆ **Suitable and convenience** for fixing the telecommunication equipment and able to adjust as requests.
Strongly Base sheet for Pole Fixed and stand-set are able to freely adjustment .
- ◆ **Produced** from Electro-Galvanized Sheet Steel with thickness of 2 mm.
- ◆ **Colored** by Electrostatic Powder Coating paint for scratch resistance.
- ◆ **New Shine Light Gray** Two-Tone color by Electrostatic Powder Coating paint for scratch resistance.
- ◆ **Manufacturing and Distribution** by ISO 9001:2008 Company.

Order No.	Description	Dimension WxDxH (mm.)
G0-61936	19" GERMANY EXPORT TELECOM RACK 36U	550 x 300 x 1800 mm.
G0-61942	19" GERMANY EXPORT TELECOM RACK 42U	550 x 300 x 2050 mm.
G0-61945	19" GERMANY EXPORT TELECOM RACK 45U	550 x 300 x 2200 mm.
G0-62142	21" GERMANY EXPORT TELECOM RACK 42U	600 x 300 x 2050 mm.
G0-62145	21" GERMANY EXPORT TELECOM RACK 45U	600 x 300 x 2200 mm.
G0-63145	PDF TELECOM CABINET 45U	900 x 300 x 2200 mm.



Mounting Pole



Castor Base



Castor

Feature

- ◆ **Designed and Manufactured** to comply with the standard of ANSI/EIA-310D-1992 (Rev.EIA-310C), IEC60297-1, IEC60297-2, BS5954 Part : 2, DIN 41494.
- ◆ **19" GERMANY EXPORT OPEN RACK** is the Free Standing Rack with Mounting Pole frame on the Ski Base. Additional frame can be added on the same base.
- ◆ **Produced** from Electro-Galvanized Sheet Steel thickness of 2.0 mm.
- ◆ **Mounting Angle Pole** was designed to be C-shape Angle in order to increase the strength. Punching of square mounting hole 10 x 10 mm.
- ◆ **Ski Base** has 2 sets of crossing steel frame to mount the ski base and can be removed to mount the Mounting Pole frame as well. The bottom part of the base has castor and pedestal.
- ◆ **Pedestal** was equipped with the castor base and is adjustable.
- ◆ **Castor** made of black Nylon Six with the diameter of 50 mm; equipped on the 360 degree swivel that allow to be moving conveniently.
- ◆ **New Shine Light Gray** Two-Tone color by Electrostatic Powder Coating paint for scratch resistance.
- ◆ **Screw Set** compose of Screws, Captive nuts, plastic Washer ; by each were coated with nickel and M6 thread system.
- ◆ **Manufacturing and Distribution** by ISO 9001:2008 Company.

Deliverly with

- Set of nut and screw according to the size of rack.

Order No.	Description	Ski Base (WxD)	Height (mm.)
G0-60027	19" GERMANY OPEN RACK 27U	530 x 700 mm.	1325 mm.
G0-60036	19" GERMANY OPEN RACK 36U	530 x 700 mm.	1725 mm.
G0-60042	19" GERMANY OPEN RACK 42U	530 x 700 mm.	1985 mm.

WALL RACK



19"GERMANY
EXPORT RACK

G1 SERIES



A



B



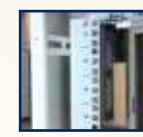
Master Key w/logo



Roller



Hinge w/logo



Mounting Pole



Two Plies Steel

Feature

- ❖ **Designed and Manufactured** to comply with the standard of ANSI/EIA-310D-1992 (Rev.EIA-310C), IEC60297-1, IEC60297-2, BS5954 Part : 2, DIN 41494.
- ❖ **Three sections** design Front Door, Center Part and Back Base Box.
- ❖ **Produced** from Electro-Galvanized Sheet Steel thickness of 1.2 mm. Mounting Pole, made of 2.0 mm.
- ❖ **Mounting Pole** were designed to be L-shape angle in order to increase the strength. Punching of square mounting hole 10 x 10 mm. They can be adjusted in/out freely to meet customer's needs. And provide the U-height screened on the mounting pole.
- ❖ **Front Door** (for model G1-XXXXX) is the steel frame with acrylic 5.0 mm. thickness with film protection and the width of acrylic is 38 cm. (the height is being influenced by the size of the rack) Door edge is bore with gray dust-proof rubber seal (3 fins). Top the front door has embossed trademark. Security locks with 19" Germany Master Key. For model G1-XXXXXP is the steel door with perforated capsule ventilation 50% of door's area.
- ❖ **Center Part** has sliding rail for adjusting the mounting pole throughout the whole depth of this part. The bottom equipped with rollers. The top has a pre-punch fan pattern for 1 to 3 Fans and on the both side has ventilation grills. Security lock with 19" Germany Master Key which is the same set as the front door.
- ❖ **Back Base Box** has the clip 10 x 10 cm. for cable access in the top and bottom. Hanger slot for screw on the back part is the two plies steel with 2.4 mm. thickness.
- ❖ **Hinge** is 19" Germany Export Rack products made from 3 pieces of high strength special PVC (ABS), rust-free and without any interfering noise. The reversibility of front and rear door opening from left of right by adjusting at one screw nut of hinge.
- ❖ **New Shine Light Gray** Two-Tone color by Electrostatic Powder Coating paint for scratch resistance.
- ❖ **Screw Set** compose of Screws, Captive nuts, Plastic washer; by each were coated with nickel and M6 thread system.
- ❖ **Manufacturing and Distribution** by ISO 9001:2008 Company.

Deliverly with

- 3 Master keys with trademark and number on the keys.
- 4 sets of wall mounting screw.
- Set of nut and screw according to the size of Rack.

Options

Color	Black or other
Thickness	1.6 mm or other

W=Width 600 mm. Standard

U	Overall H Height(mm.)	Order No. of Different Depth (mm.)			Figure
		D = 400	D = 500	D = 600	
1U=44.45mm.					
6U	320	G1-60406	G1-60506	G1-60606	A
9U	455	G1-60409	G1-60509	G1-60609	
12U	590	G1-60412	G1-60512	G1-60612	
6U	320	G1-60406P	G1-60506P	G1-60606P	B
9U	455	G1-60409P	G1-60509P	G1-60609P	
12U	590	G1-60412P	G1-60512P	G1-60612P	

* Order No. for Black Color : G1-XXXXXB

Sample : G1-60609B Wall Rack 9U, 60 x 60 cm., Black Color

CATALOG 19" GERMANY RACK



Master Key w/logo



Roller



Hinge w/logo



Mounting Pole



Two Plies Steel

Feature

- ❖ **Designed and Manufactured** to comply with the standard of ANSI/EIA-310D-1992 (Rev.EIA-310C), IEC60297-1, IEC60297-2, BS5954 Part : 2, DIN 41494.
- ❖ **Three sections** design Front Door, Center Part and Back Base Box.
- ❖ **Produced** from Electro-Galvanized Sheet Steel thickness of 1.2 mm. Mounting Pole, made of 2.0 mm.
- ❖ **Mounting Pole** were designed to be L-shape Angle in order to increase the strength. Punching of square mounting hole 10 x 10 mm. They can be adjusted in/out freely to meet customer's needs. And provide the U-height screened on the mounting pole.
- ❖ **Front Door** is the steel frame with Acrylic 5.0 mm. thickness with film protection and the width of acrylic is 38 cm. (the height is being influenced by the size of the rack) which is perforated capsule surrounding the acrylic. Door edge is bore with gray dust-proof rubber seal (3 fins). Top the front door has embossed trademark. Security locks with 19" Germany Master Key.
- ❖ **Center Part** has sliding rail for adjusting the mounting pole throughout the whole depth of this part. The bottom equipped with rollers. The top has a pre-punch fan pattern for 1 to 3 Fans and on the both side has ventilation grilles. Security lock with 19" Germany Master Key which is the same set as the front door.
- ❖ **Back Base Box** has the clip 10 x 10 cm. for cable access in the top and bottom. Hanger slot for screw on the back part is the two plies steel with 2.4 mm. thickness.
- ❖ **Hinge** is 19" Germany Export Rack products made from 3 pieces of high strength special PVC (ABS), rust-free and without any interfering noise. The reversibility of front and rear door opening from left of right by adjusting at one screw nut of hinge.
- ❖ **New Shine Light Gray** Two-Tone color by Electrostatic Powder Coating paint for scratch resistance.
- ❖ **Screw Set** compose of Screws, Captive nuts, plastic Washer; by each were coated with nickel and M6 thread system.
- ❖ **Manufacturing and Distribution** by ISO 9001:2008 Company.

Deliverly with

- 3 Master keys with trademark and number on the keys.
- 4 sets of wall mounting screw.
- Set of nut and screw according to the size of Rack.

Options

Color	Black or other
Thickness	1.6 mm or other

W=Width 600 mm. Standard

U	Overall H Height(mm.)	Order No. of Different Depth (mm.)		
		D = 400	D = 500	D = 600
6U	320	G2-60406	G2-60506	G2-60606
9U	455	G2-60409	G2-60509	G2-60609
12U	590	G2-60412	G2-60612	G2-60612

VENTILATING FAN



Feature

- ◆ Provides natural air convection within the cabinet.
- ◆ Two ball bearing heavy duty type with glass fiber reinforced plastic Impeller complied to UL 94V-0 rating and impedance protected.
- ◆ 120 x 120 x 38 mm. die-cast aluminum housing with black ABS plastic guard 7.0 mm. thickness with embossed trademark 19"Germany Export Rack.
- ◆ Frame for 2 x 4" & 3 x 4" Fan set made from Electro-Galvanized sheet steel, light gray colour Electrostatic powder coating.

Technical Specification

- Speed : 2400 rpm
- Max air flow : 2.01 m³/min or 72 CFM
- Operating temp. : - 30°C to + 70°C
- Input voltage : 220VAC/50Hz
- Max Power : 11 W
- Life Expectency : 5000 Hours Continuous
- Approvals : CE & UL/CSA

Options

Color : Black

- ◆ Power cord, 1.80 m. for individual fan and 1.40 m., 3C x 18AWG with ground for 2 x 4" and 3 x 4" fan set.
- ◆ Assembly and Distribution by ISO 9001:2008 Company.

Order No.	Description	Figure
G7-05001	1 x ø 4" HEAVY DUTY FAN (Individual) w/Cable 1.8 M	A
G7-05002	2 x ø 4" HEAVY DUTY FAN SET w/Cable 1.4 M	B
G7-05003	3 x ø 4" HEAVY DUTY FAN SET w/Cable 1.4 M	C

* Order No. for Black Color : G7-050XXB

Sample : G7-05002B 2 x ø 4" HEAVY DUTY FAN SET w/Cable 1.4 M., Black Color

AC POWER DISTRIBUTION UNIT



CATALOG 19" GERMANY RACK

Feature

- ◆ **Suitable** for computer, network equipment etc.
- ◆ **15A AC Socket Strip** with electronic circuit breaker and line suppression with Cable (3 x 14AWG), 3 metres for 6, 8, 12, 20 outlets and 1.8 metres for 4 outlets. (USA Plug w/ground)
- ◆ **30A AC Socket Strip** with electronic circuit breaker and line suppression with Cable (3 x 4Sqmm), 3 metres type Open End for 12, 20 outlets.
- ◆ **Sockets are 19" Germany Export Rack** universal type with embossed trademark and made from PC/ABS complied to UL 94V-0 rating.
- ◆ **Housing** made from Electro-Galvanized sheet steel, light gray colour Electrostatic powder coating.
- ◆ **Illuminated** switch, short circuit and over current electronic circuit breaker.
- ◆ **Provided** with mounting bracket for vertically mount on 19" RACK.

Electrical technical

- nominal current : 15 Amp for 4, 6, 8,12, 20 Outlets
30 Amp for 12, 20 Outlets
- withstanding surge current : 6.5 KA.
- nominal voltage : 220 VAC. 50Hz
- clamping voltage : 775 V. max
- connection cable : 15 Amp : UL E150631
30 Amp : TIS 11-2531
- USA style plug (male) : UL E147650
- temp. range : -25°C to +85°C
- ◆ **5 type** options : 4, 6, 8, 12 and 20 outlets
- ◆ **Assembly and Distribution** by ISO 9001:2008 Company.

Options

Color : *Black

Order No.	Description	Figure
G7-00004	AC POWER DISTRIBUTION 4 Universal Outlet w/Cable 1.8 M. & Surge Protection, 15Amp	A
G7-00006	AC POWER DISTRIBUTION 6 Universal Outlet w/Cable 3 M. & Surge Protection, 15Amp	B
G7-00008	AC POWER DISTRIBUTION 8 Universal Outlet w/Cable 3 M. & Surge Protection, 15Amp	C
G7-00012	AC POWER DISTRIBUTION 12 Universal Outlet w/Cable 3 M. & Surge Protection, 15Amp	D
G7-00020	AC POWER DISTRIBUTION 20 Universal Outlet w/Cable 3 M. & Surge Protection, 15Amp	-
Order No.	Description	Figure
G7-00112	AC POWER DISTRIBUTION 12 Universal Outlet w/Cable(Open End) 3 M. & Protection, 30Amp	E
G7-00120	AC POWER DISTRIBUTION 20 Universal Outlet w/Cable(Open End) 3 M. & Protection, 30Amp	-

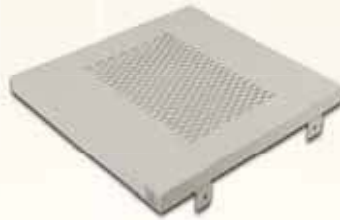
* Order No. for Black Color : G7-00XXXB

Sample : G7-00012B AC PDU 12 Outlet w/Cable 3 M., Black Color

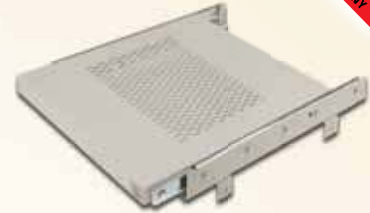
COMPONENT SHELVES



A



B



C



Load Test



Ventilation



19" GERMANY Sliding

*Safety Factor 100% More

Feature

- ◆ **19" GERMANY EXPORT RACK SHELVES** were designed to easy mounted on all standard 19" rack system with ventilation slots.
- ◆ **Manufactured** to the standard of ANSI/EIA-310D-1992 (Rev.EIA-310C), IEC60297-1, IEC60297-2, BS5954 Part2, DIN41494
- ◆ **Product** from Electro-Galvanize Sheet Steel with thickness of 1.5 mm. Max. load capacity and Optional type and deep size.
 - 1 U Front Screw Shelf for Open Rack and Wall Rack 50 kgs.* **A**
 - Fixed Shelf 100 kgs.* **B**
 - Sliding Shelf 75 kgs.* **C**
- ◆ **Electrostatic** Powder Coating paint, New Shine. light gray color.
- ◆ **Manufacturing and Distribution** by ISO 9001:2008 Company.

Description	Deep					Figure
	250 mm.	480 mm.	650 mm.	750 mm.	950 mm.	
FRONT PANEL FIX SHELF	G7-01025	-	-	-	-	A
FIX COMPONENT SHELF	-	G7-02045	G7-02065	G7-02075	G7-02095	B
SLIDE COMPONENT SHELF	-	G7-03045	G7-03065	G7-03075	G7-03095	C

* Order No. for Black Color : G7-0XXXXB

Sample : G7-02065B Fix Component Shelf Deep 65 cm., Black Color

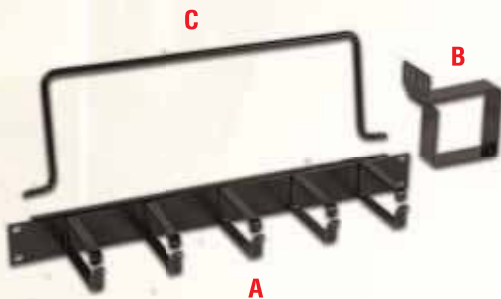
ACCESSORIES



- G7-05112** : Thermostat Panel Set
- Adjust Temp.Range : 0°C to 80°C
 - Can use for controlling the ventilating fan
 - Power Cord 3 m., Electro Galvanize Steel 1.5 mm.



- G7-09200** : Lighting Set
- Lamp : 7W
 - Input Voltage : 220VAC/50Hz



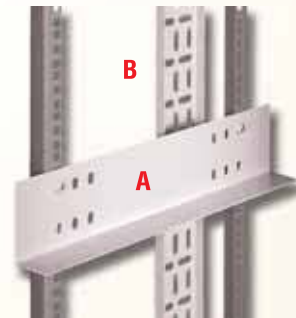
- A G7-06002** : Cable Management Panel, 1U
B G7-06004 : Vertical Management Ring
C G7-06006 : Cable Back Support Bar



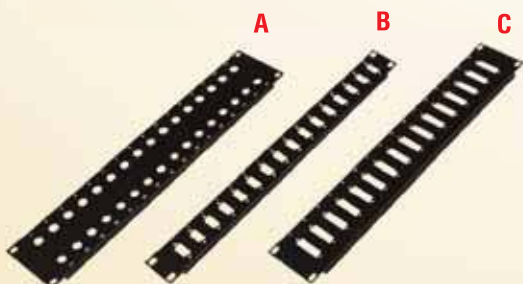
- G7-06003** : Cable Management Panel with Cover, 1U
- Electro Galvanize Steel 1.5 mm. Black Color



- G7-0601x** : Blank Panels x U*
 (x = 1, 2, 3, 4, 5, 6, 7, 8)
 *Available Black color on request



- A G7-080xx** : Cassis Guide Set (2 Pcs/Set)
 (x = Deep = 45, 65, 75, 95 cm.)
B G7-090xx : Cable Tray 7.5 cm for Cable Run
 (x = U = 15, 27, 36, 39, 42, 45)



- A G7-07014** : 2U for BNC 32 Port
B G7-07016 : 1U for DB9 16 Port
C G7-07018 : 2U for DB25 16 Port



- A G7-09100** : Baying Kit Set (6 Pcs/Set)
B G7-09300 : Screw M6 + Captive Nut M6 + Plastic Washer Set

SPECIAL SERVER RACK, DATA CENTER RACK



G4, G5 SERIES



G5



G4



Double Door

CATALOG 19" GERMANY RACK

G4 -



Width

6 = 600 mm.
8 = 800 mm.

Depth

06 = 600 mm.
08 = 800 mm.
09 = 900 mm.
10 = 1000 mm.
11 = 1100 mm.

U Height

27 = 27U
36 = 36U
42 = 42U
45 = 45U

Rear Door

D = Double Door

Color

B = Black
No fill = Light Gray Two-Tone

* Sample Order : G4-60642DB Server Rack 42U, 60 x 60 cm., Rear Double door, Black Color

G5 -



Width

6 = 600 mm.
8 = 800 mm.

Depth

06 = 600 mm.
08 = 800 mm.
09 = 900 mm.
10 = 1000 mm.
11 = 1100 mm.

U Height

27 = 27U
36 = 36U
42 = 42U
45 = 45U

Front Door

D = Double Door
No fill = Single Door

Rear Door

D = Double Door

Color

B = Black
No fill = Light GrayTwo-Tone

* Sample Order : G5-60642DB Data Center Rack 42U, 60 x 60 cm., Rear Double door, Black Color
G5-60642DDB Data Center Rack 42U, 60 x 60 cm., Front Double door, Rear Double door, Black Color



19"GERMANY[®]
EXPORT RACK

GERMAN RACK

DISTRIBUTED BY



INTERLINK COMMUNICATION PUBLIC COMPANY LIMITED

48 Interlink Building, Soi Rung-Reung, Ratchadapisek Road, Samsennok, Huay Khwang, Bangkok 10310, Thailand

Tel : +66 2693 1222 (30 lines) Fax : +66 2693 1399 (Auto) Hotline : +66 2181 1522 (Auto)

www.interlink.co.th E-mail : info@interlink.co.th